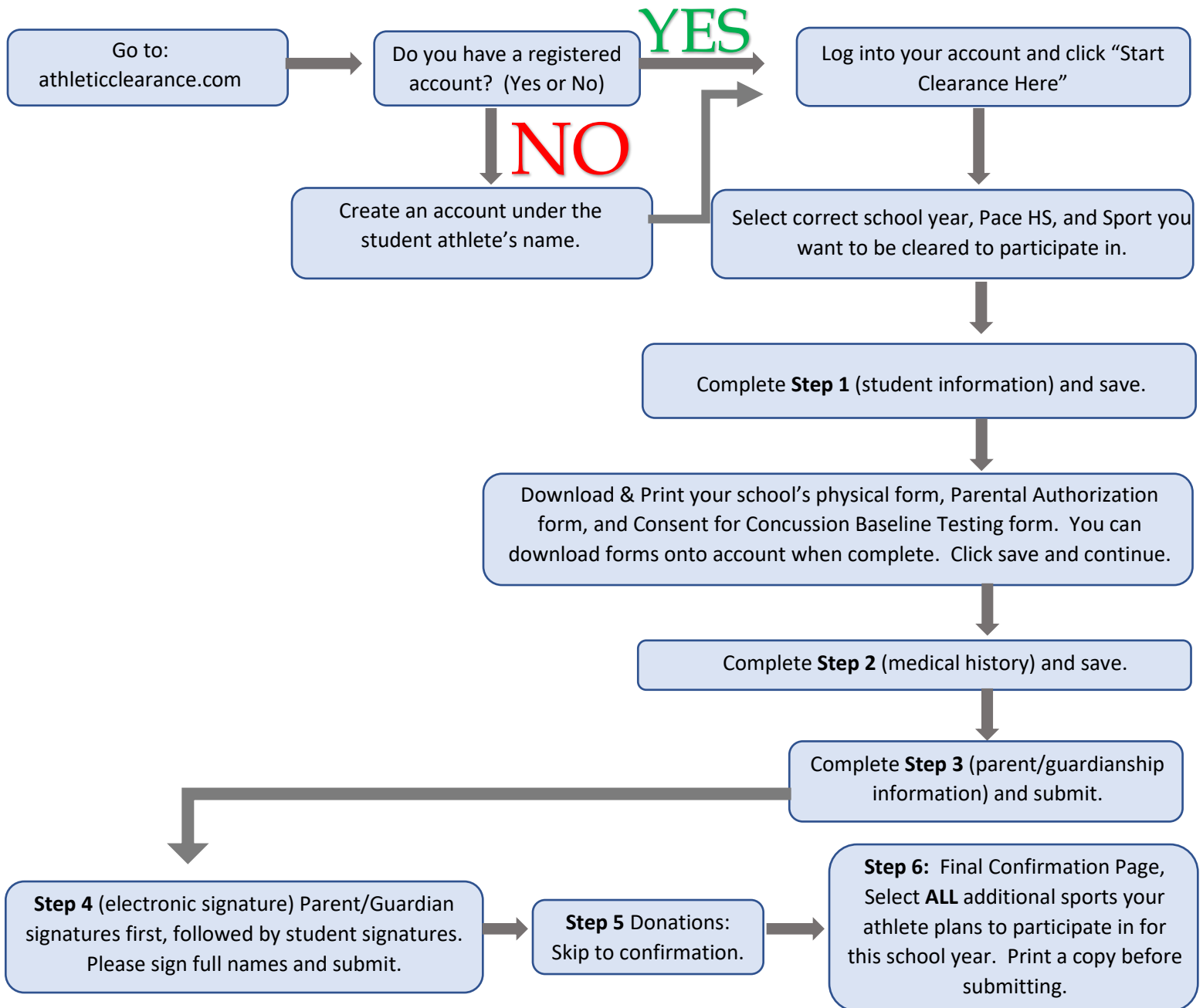


Pace High School athleticclearance.com Participation Procedures



NOTICE: Physical form and Parental Authorization Off Campus form are to be signed by a parent in the presence of a Notary. **DO NOT SIGN FORMS UNLESS A NOTARY IS PRESENT.** Upon completion, **ALL** forms must be submitted on-line along with a copy of the athlete's insurance. **All athletes MUST have insurance to participate. FAILURE TO COMPLETE ALL STEPS WILL DELAY YOUR SON OR DAUGHTER FROM PARTICIPATING IN ATHLETICS AT PACE HIGH SCHOOL.**

For more information or questions, please email wellinga@santarosa.k12.fl.us or warnercl@santarosa.k12.fl.us